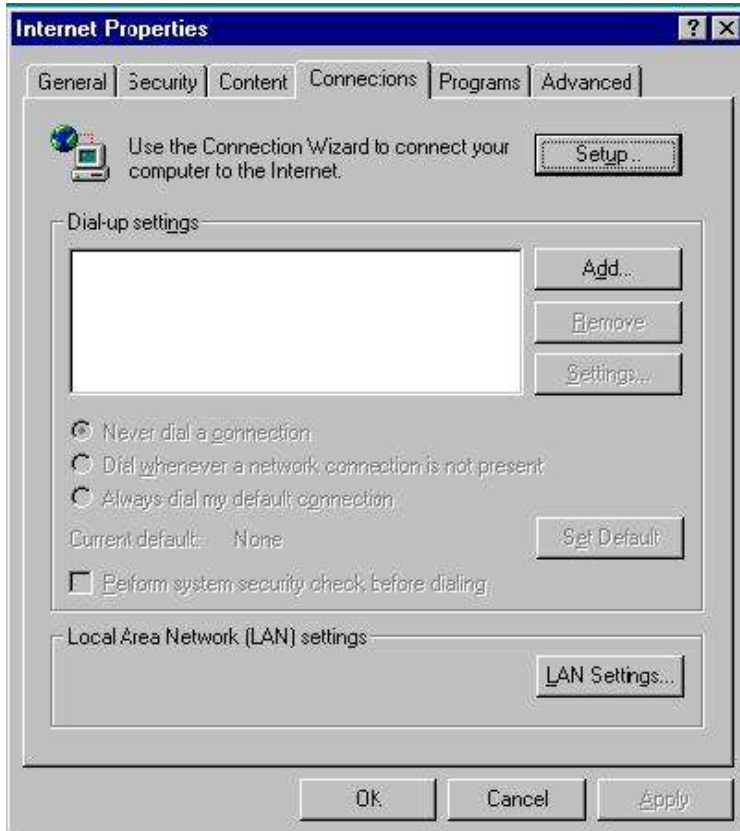


## Configure a Dial-up Connection in Windows ME

Right click on the Internet Explorer icon and choose properties. In the window that appears, click on the Connections tab.



Click the Add button to begin the Make New Connection Wizard.



Type a name for the connection (usually RickNet or Door County Online – this name can be anything that tells you who you are connecting to). Then click next. The next window will ask you to enter a phone number to dial to access the Internet. Once you have done this, click next.



Click Finish to exit the Make New Connection Wizard.

Now double click on the Internet Explorer icon to open your browser. It will prompt you for a username and password to dial up to the Internet. These are provided by Online Door County when you sign up for your Internet service. If you would like to save this information so you do not have to type it in again the next time you connect to the internet, click the checkbox that says “Save password”, and then click Connect.

