


Configure a Dial-up Connection in Windows 2000

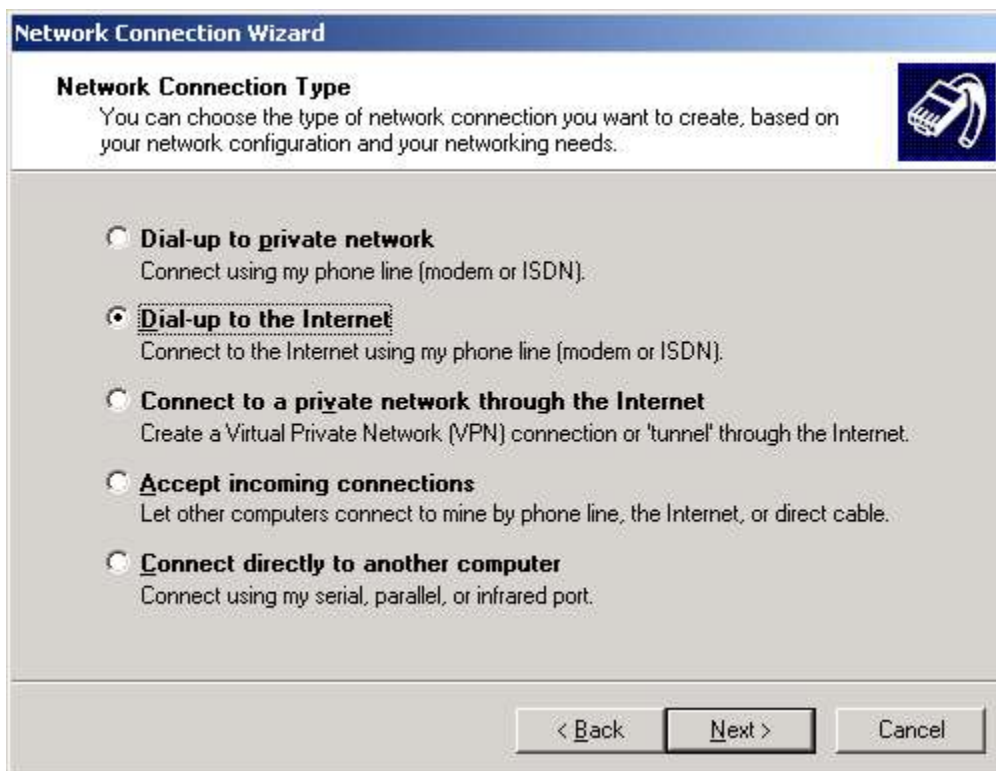
Click Start, Settings, and select Network and Dialup Connections

In the Network and Dialup Connections window, double click the Make New Connection icon. This will initiate the Network Connection Wizard. The first step is to enter your area code in the box shown below, if you haven't already done so.



The "Location Information" dialog box is shown. It has a title bar with a question mark and a close button. On the left is a blue background with a white telephone icon. The main text reads: "Before you can make any phone or modem connections, Windows needs the following information about your current location." Below this is a question: "What country/region are you in now?" with a dropdown menu showing "United States of America". Another question is: "What area code (or city code) are you in now?" with an empty text box. A third question is: "If you dial a number to access an outside line, what is it?" with another empty text box. At the bottom, it asks "The phone system at this location uses:" with two radio buttons: "One dialing" (selected) and "Pulse dialing". "OK" and "Cancel" buttons are at the bottom right.

Once you have done this, you can click "OK" and continue with the wizard. Click "Next" on the first form of the wizard to bring up the following window. Select "Dial up to the Internet" as shown, and click Next.

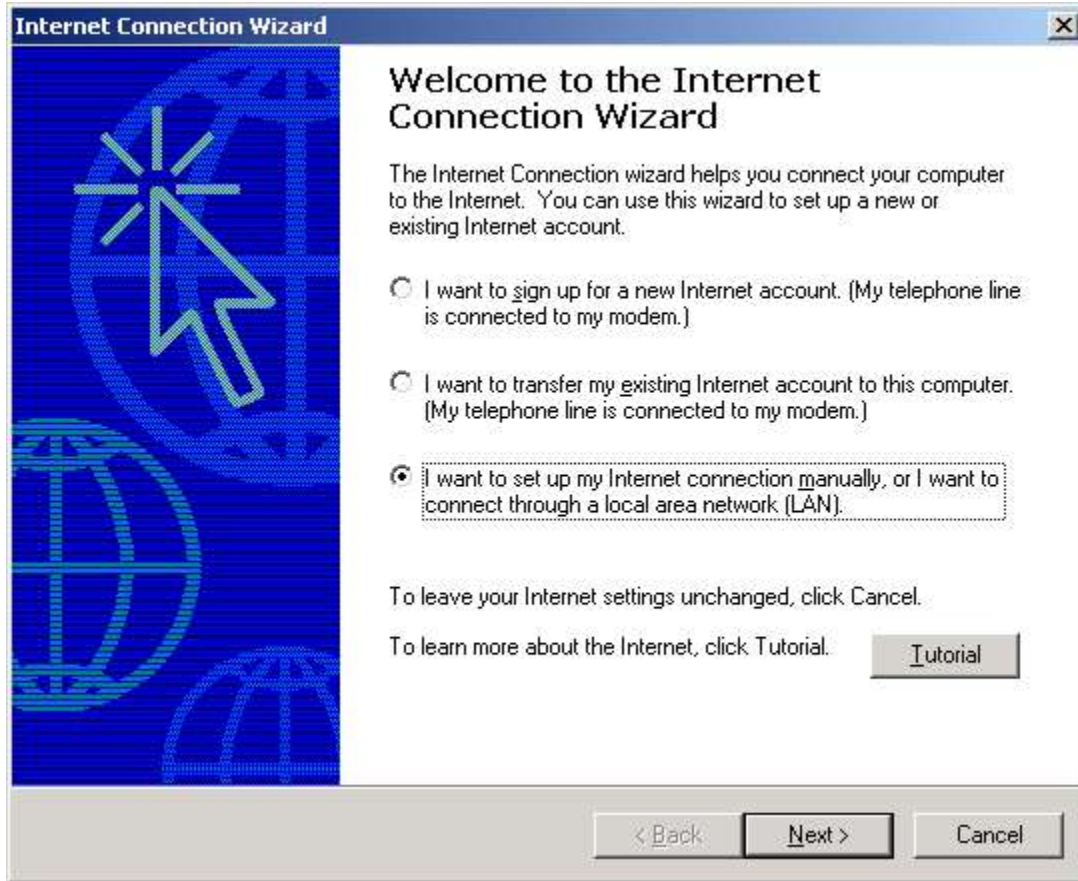


The "Network Connection Wizard" dialog box is shown. It has a title bar with the text "Network Connection Wizard". Below the title bar is a section titled "Network Connection Type" with a telephone icon. The text reads: "You can choose the type of network connection you want to create, based on your network configuration and your networking needs." There are five radio button options:

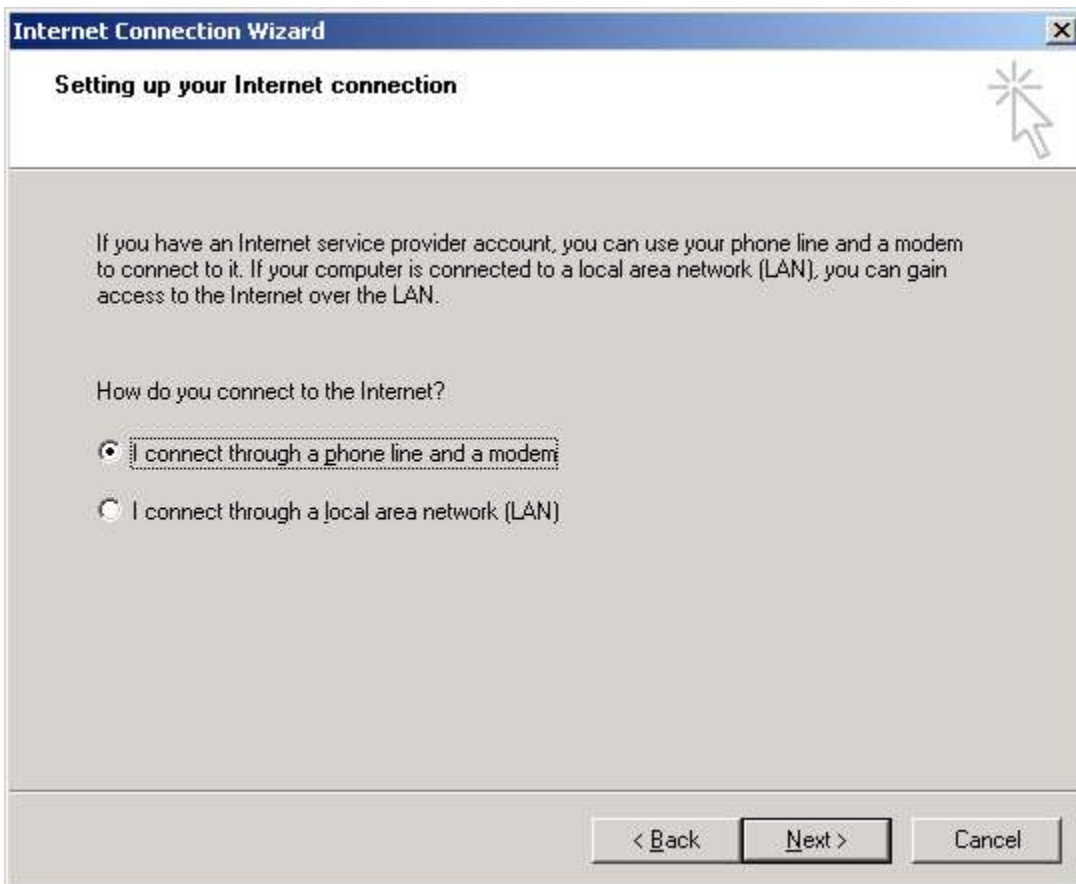
- Dial-up to private network
Connect using my phone line (modem or ISDN).
- Dial-up to the Internet
Connect to the Internet using my phone line (modem or ISDN).
- Connect to a private network through the Internet
Create a Virtual Private Network (VPN) connection or 'tunnel' through the Internet.
- Accept incoming connections
Let other computers connect to mine by phone line, the Internet, or direct cable.
- Connect directly to another computer
Connect using my serial, parallel, or infrared port.

At the bottom are three buttons: "< Back", "Next >", and "Cancel".

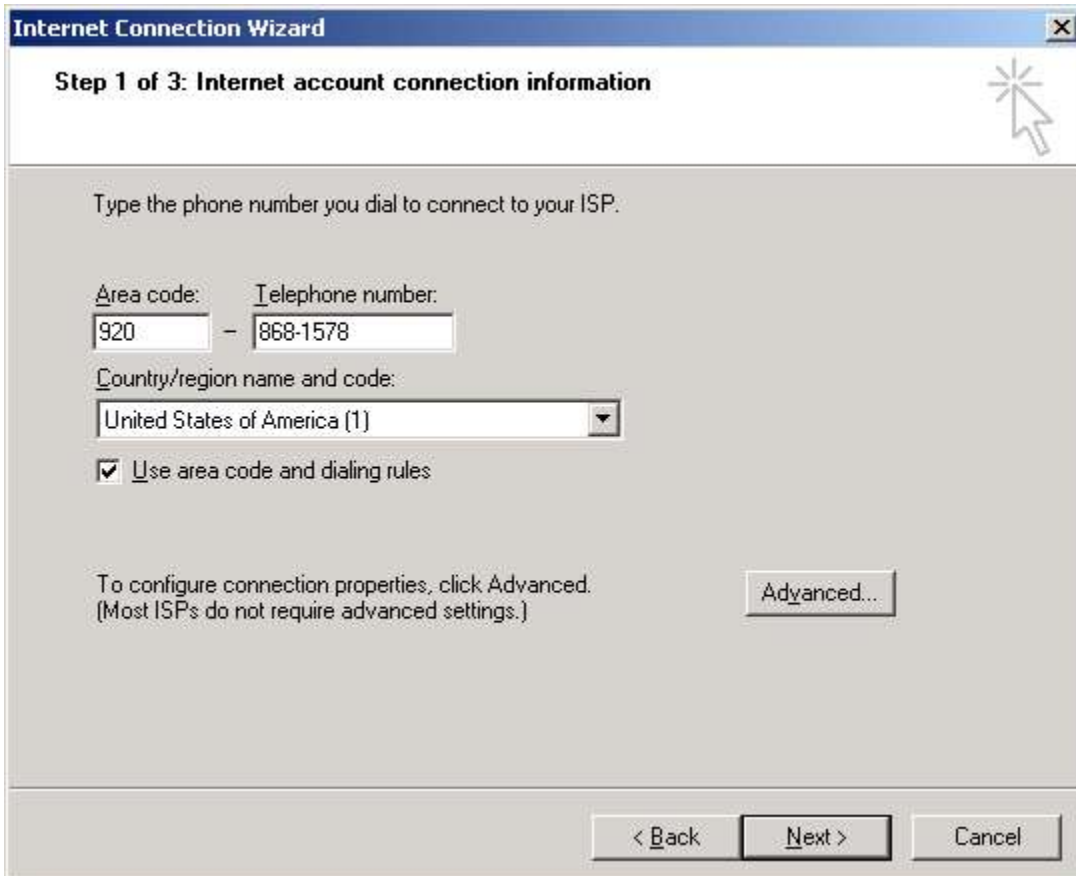
This will start the Internet Connection Wizard. Make the selection shown below and click Next.



The next screen will look similar to this one. Tell the wizard you want to connect through a phone line and modem and click next.



The next screen asks you for a telephone number. Enter in the appropriate number and click next.



Next you must enter the username and password given to you by Door County Online.

Internet Connection Wizard [X]

Step 2 of 3: Internet account logon information

Type the user name and password you use to log on to your ISP. Your user name may also be referred to as your Member ID or User ID. If you do not know this information, contact your ISP.

User name:

Password:

< Back Next > Cancel

Next, give your new connection a name. It can be anything you like, as long as you know it's us. Then click next. Select No when asked to set up an internet mail account, and then click Finish. You're done!